



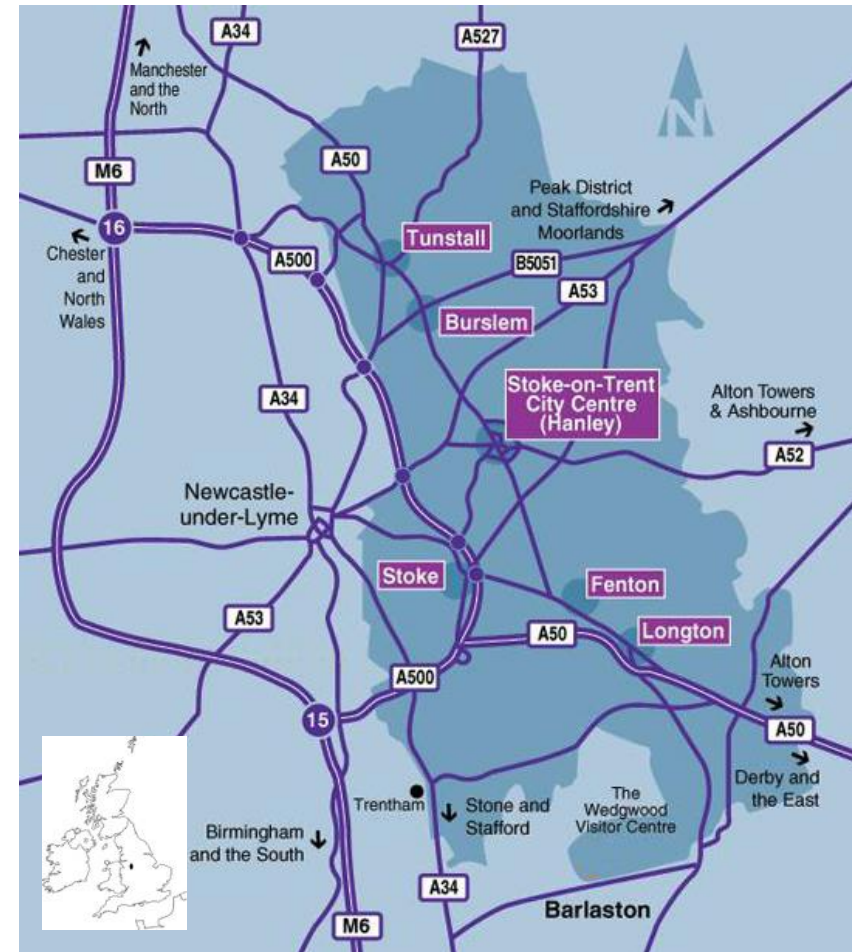
COTAC Insight 3: Support Presentation

The Potteries and Surrounding Areas:

For Copyright Attributions See Presentation Support Notes

In this illustrated support presentation the following questions will be considered in relation to The Potteries and Surrounding Areas:

- What is special and why?
- Is appearance and appeal important?
- How does a building work?
- What needs to be thought about?
- How does what we do affect the heritage?

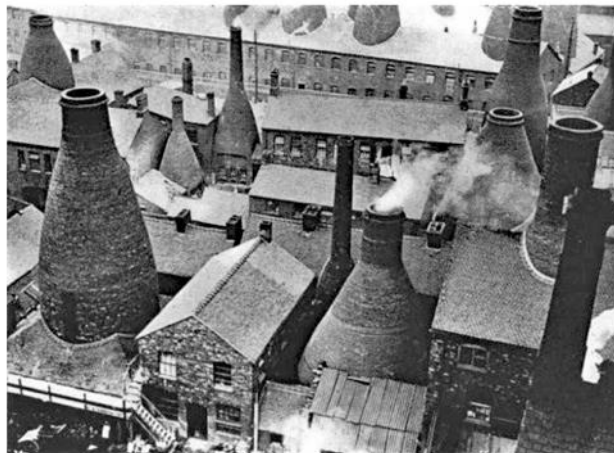
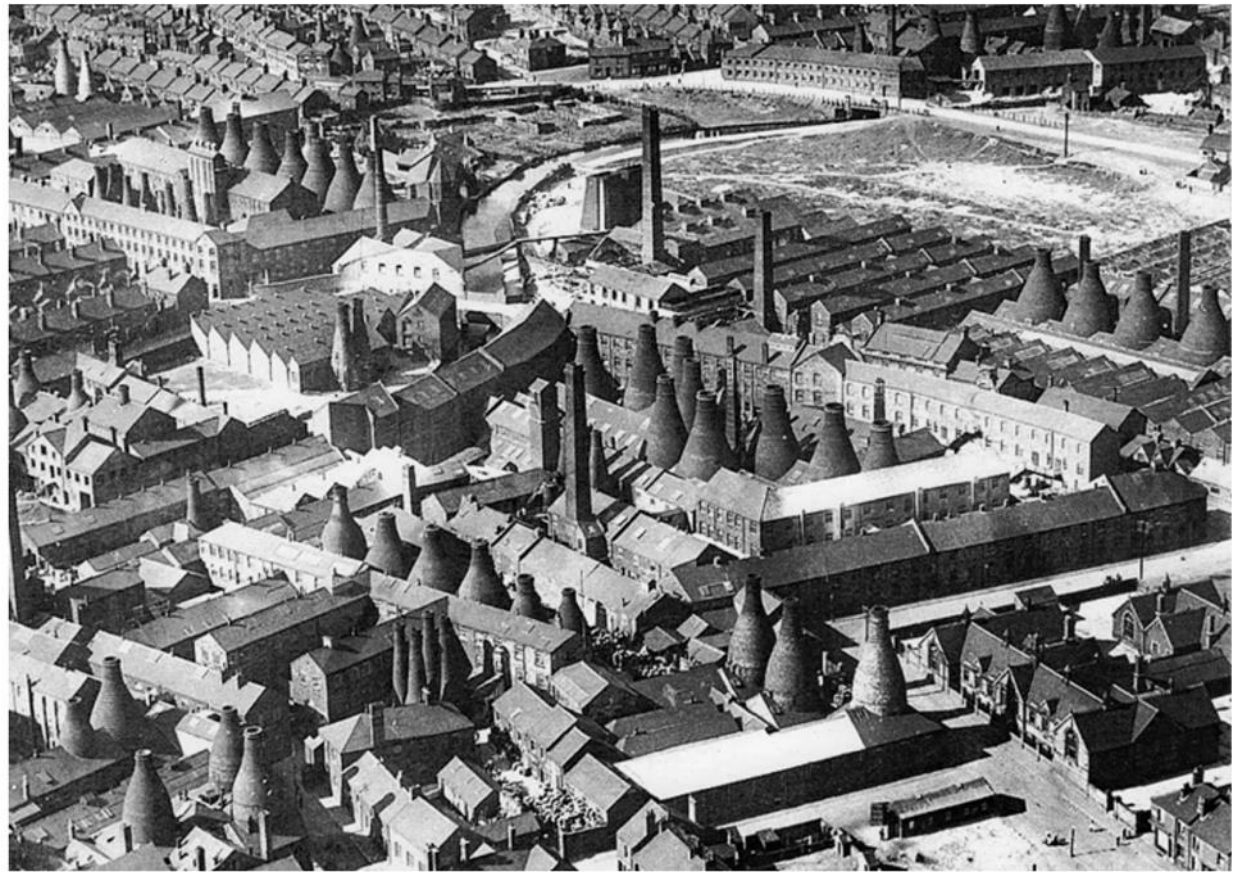


What is special and why?

- Recognition of the significance of the industrial past is growing
- The integration of civic, religious, industrial and residential needs
- The degree of change and loss increases that awareness















Compare a selection of historic maps to modern map or satellite layers

1. Select a category: Great Britain

[Zoom to extent](#)

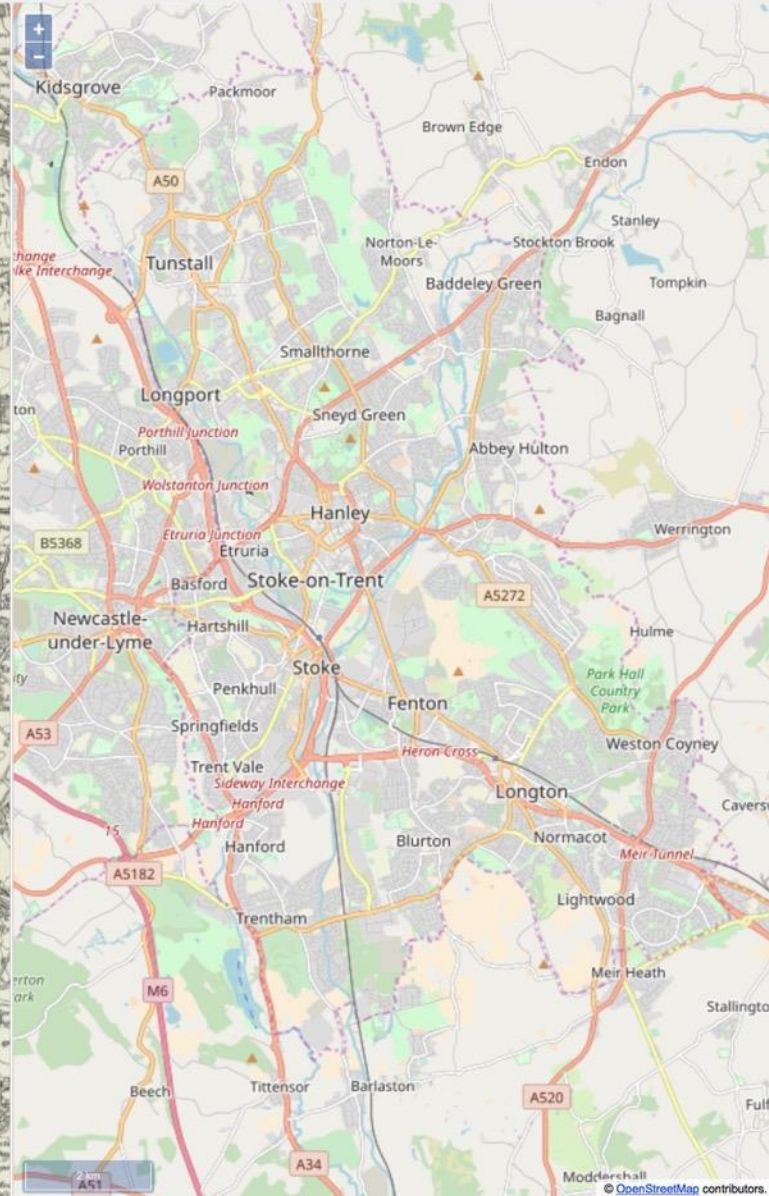
2. Select a map series: OS One Inch, 1885-1900 - Outline



1. Select a category: Bing / ESRI / OSM

[Zoom to extent](#)

2. Select a map series: OpenStreetMap



Is appearance and appeal important?

The remaining industrial structures support the regions identity
Appreciating building shapes and forms aid that visual recognition
The integrated use of building materials







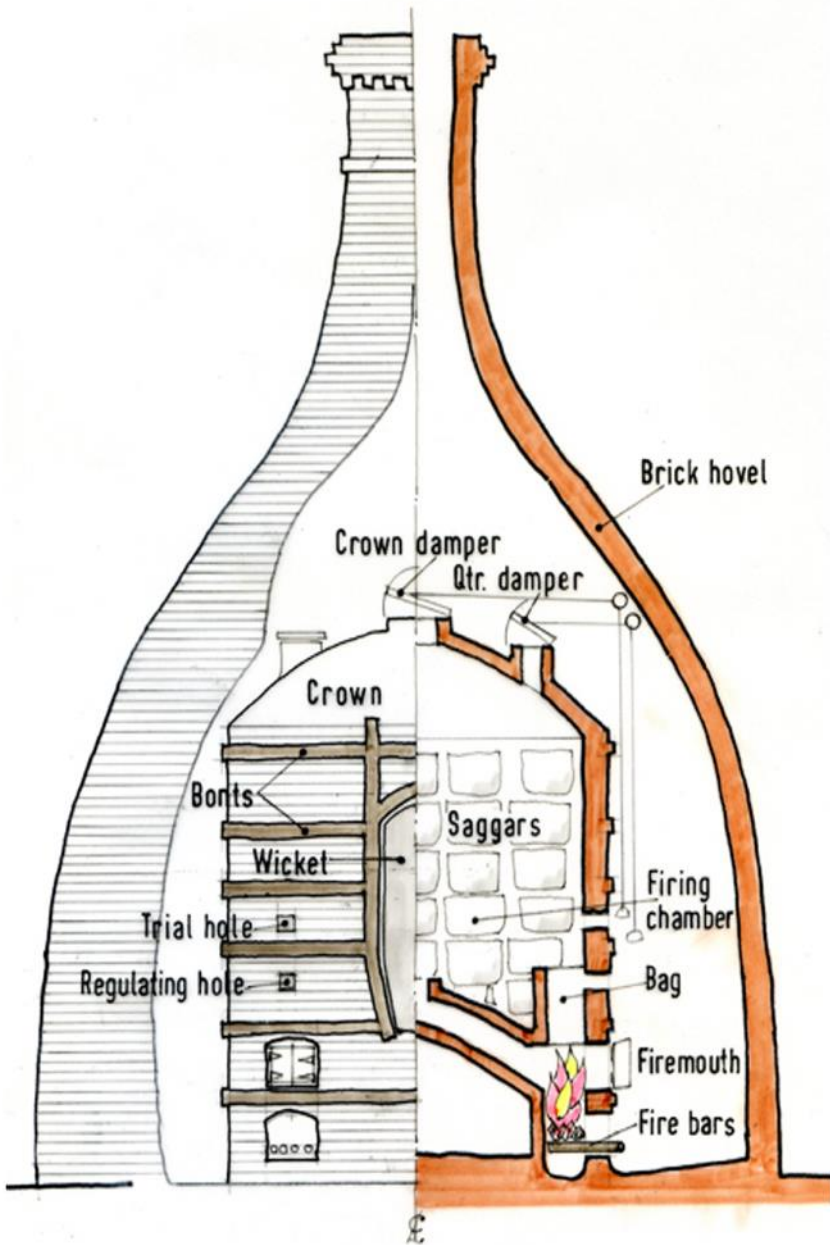
How does a building work?

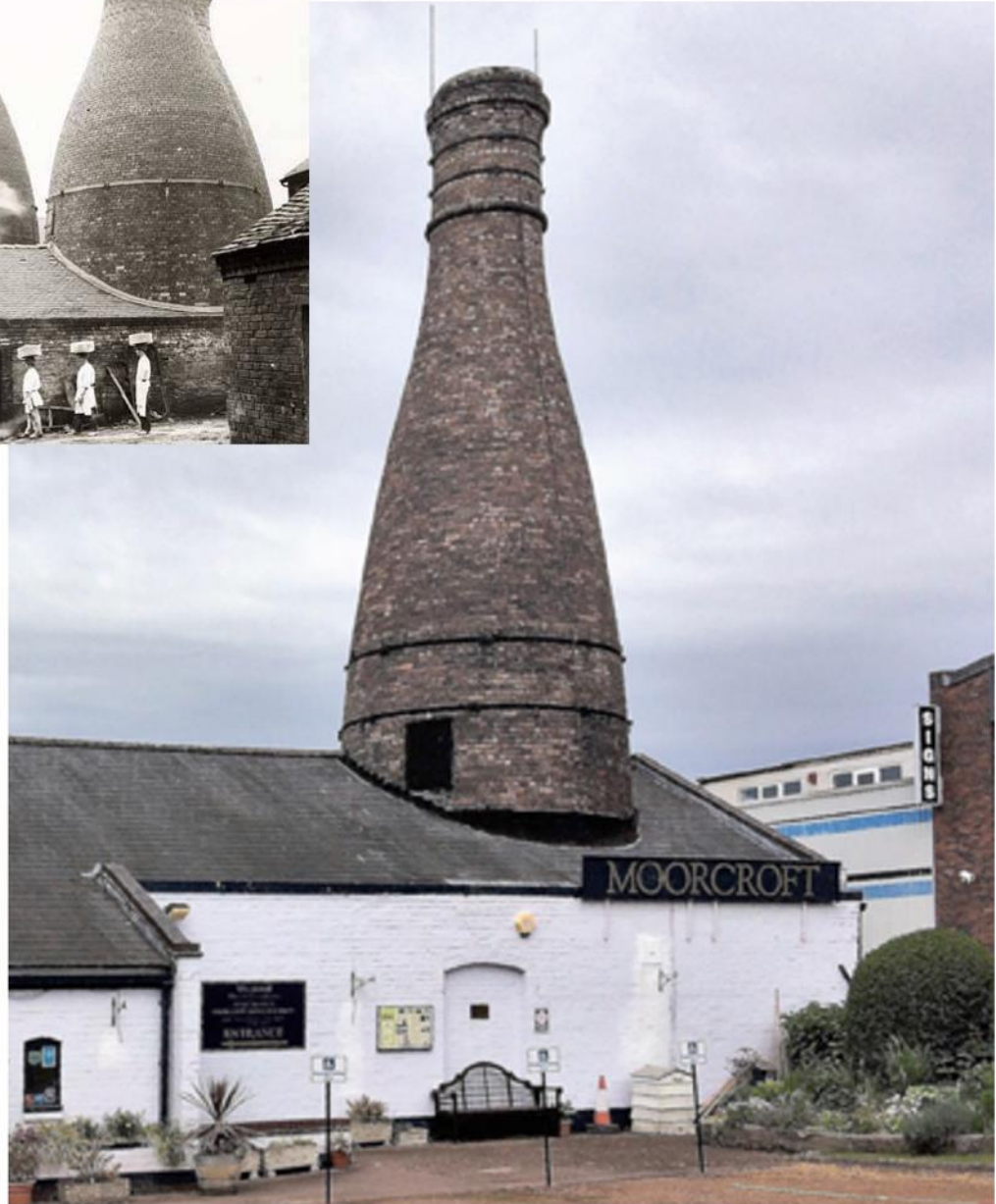
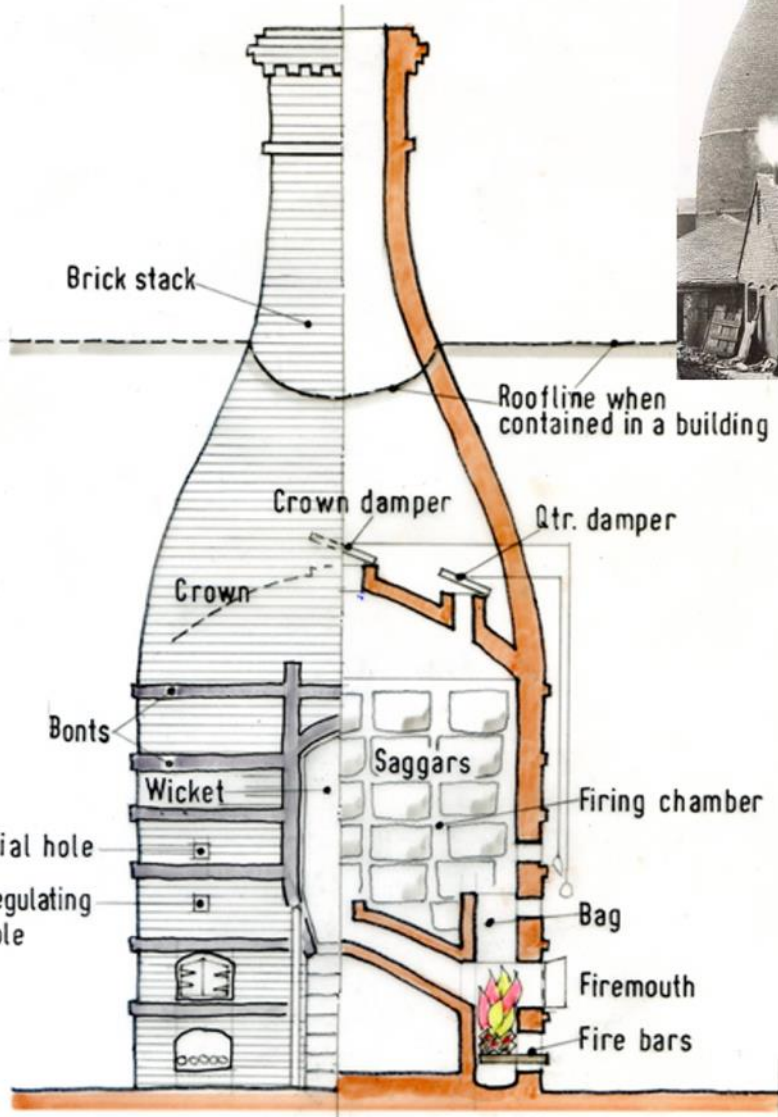
Different operational needs determine the required size and scale

Various manufacturing processes determined shapes and form

Collectively the internal building processes were symbiotic in results

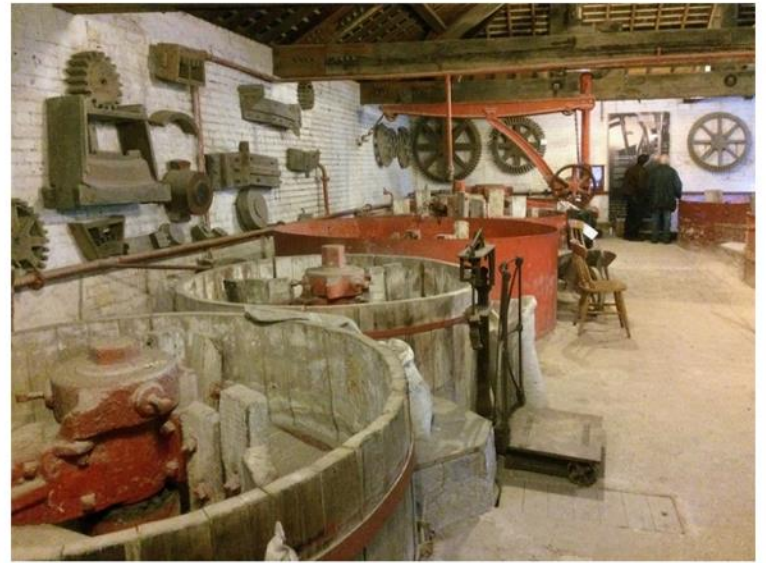












What needs to be thought about?

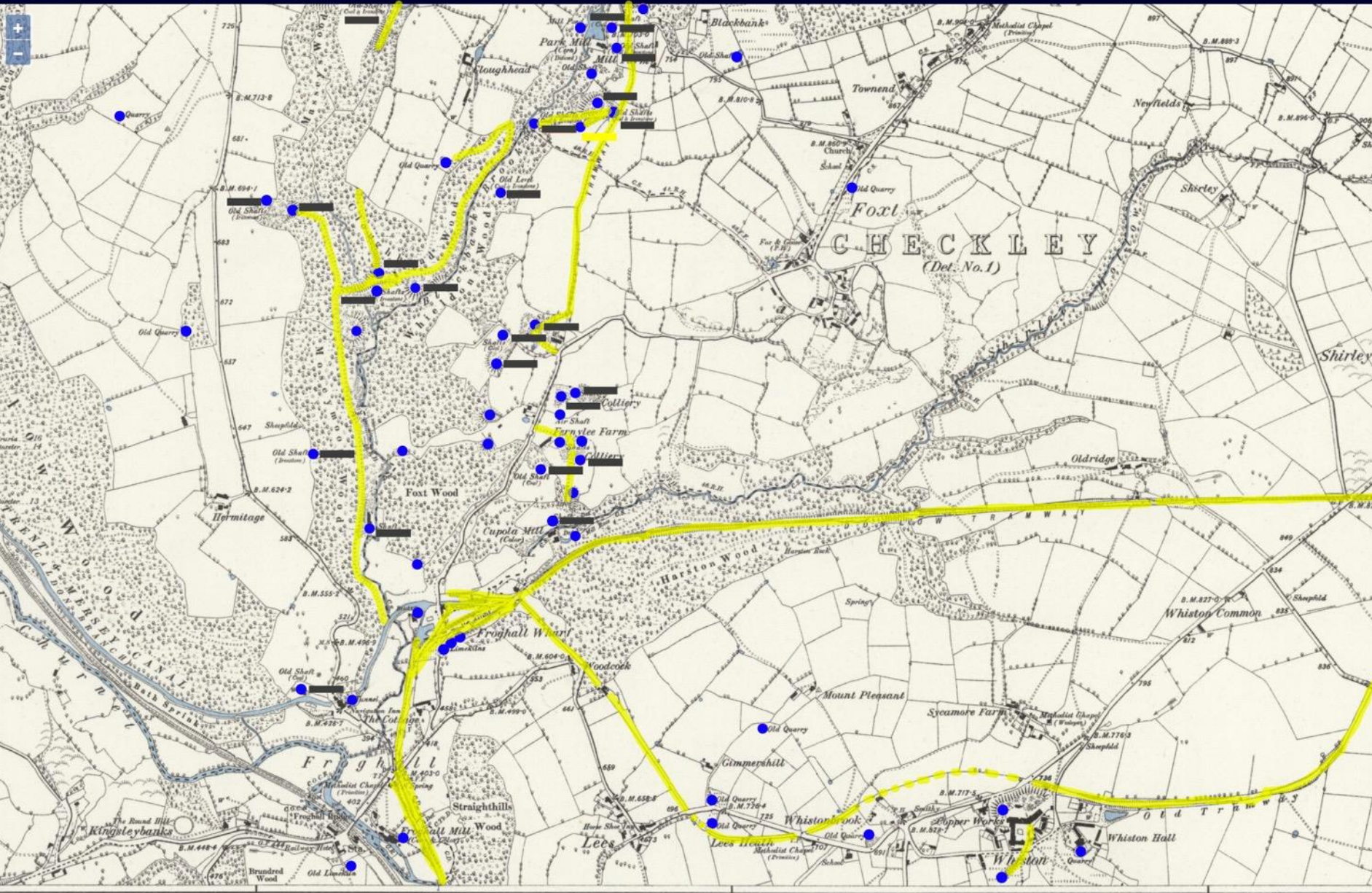
What various processes were carried out simultaneously

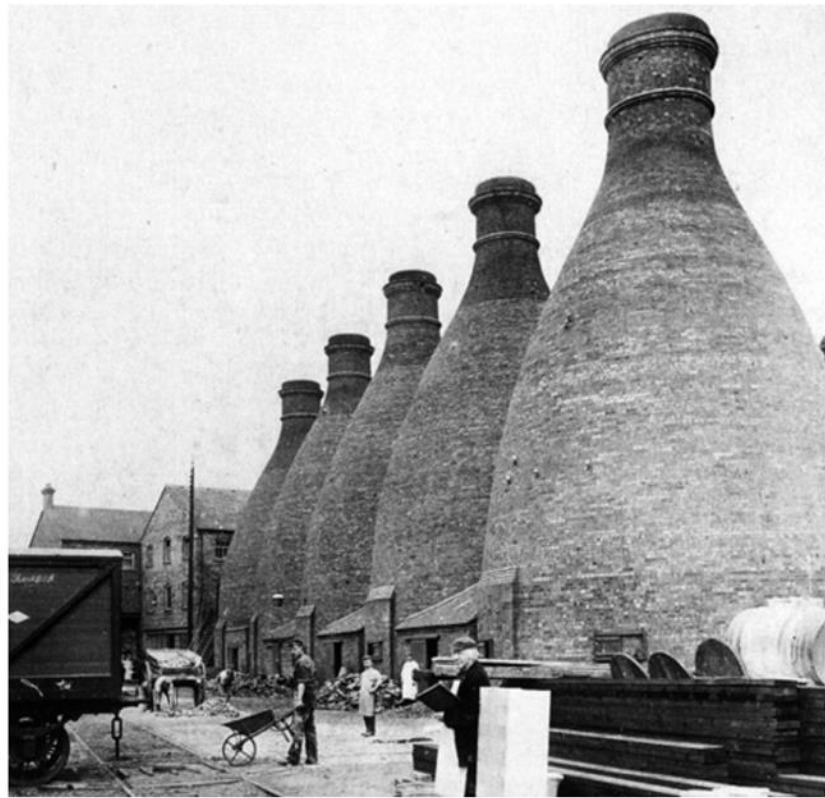
Regular material and energy supplies were critical to success

Sourcing, transporting and distributing methods were essential

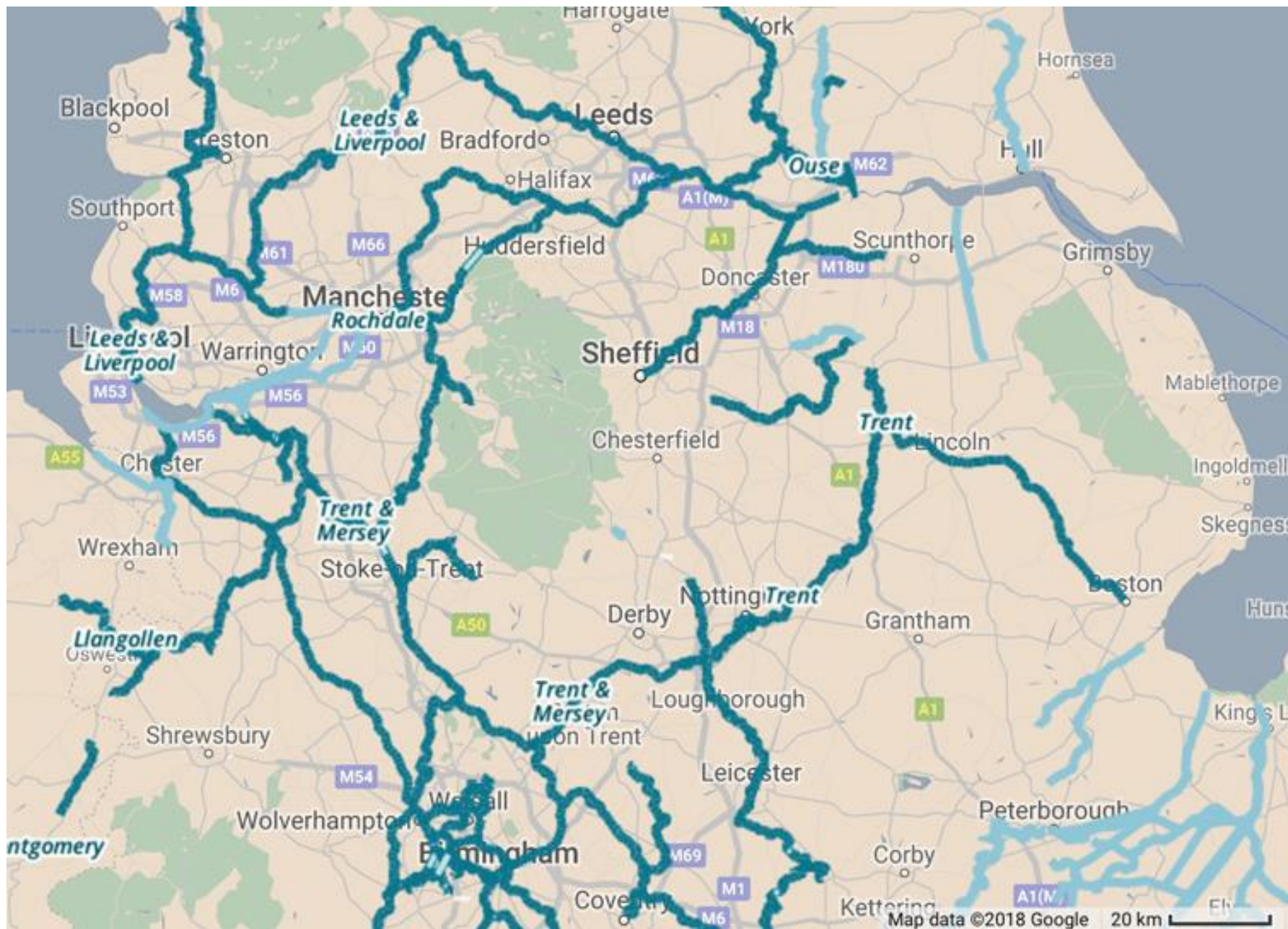


Maps home > OS Six-inch England and Wales, 1842-1952





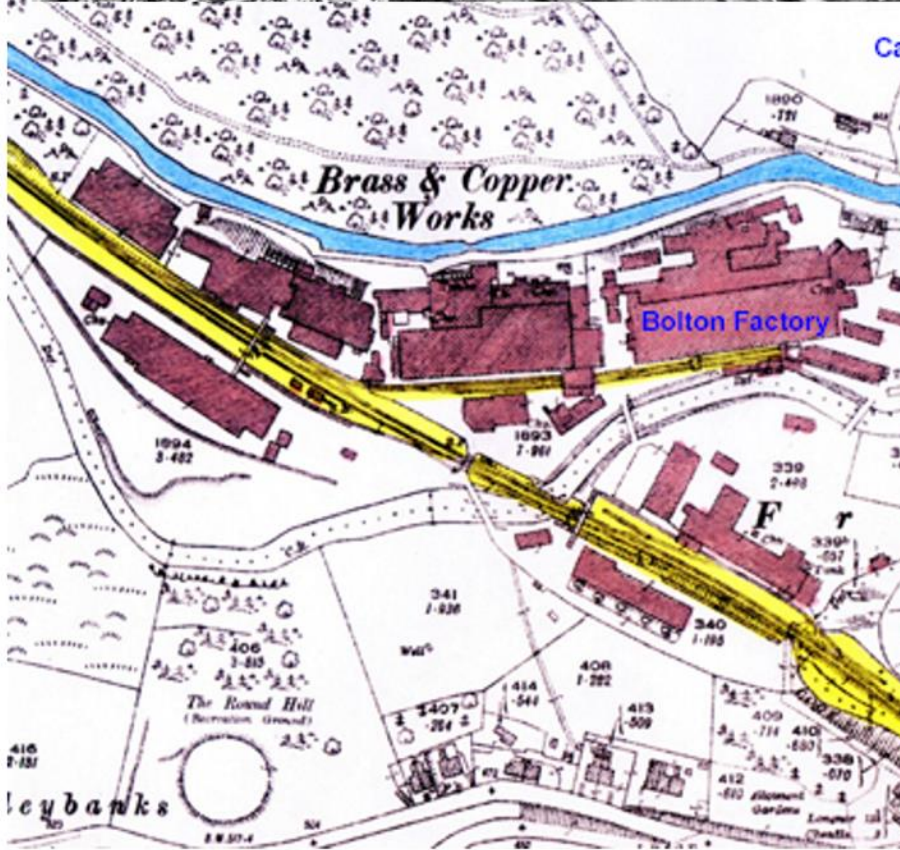
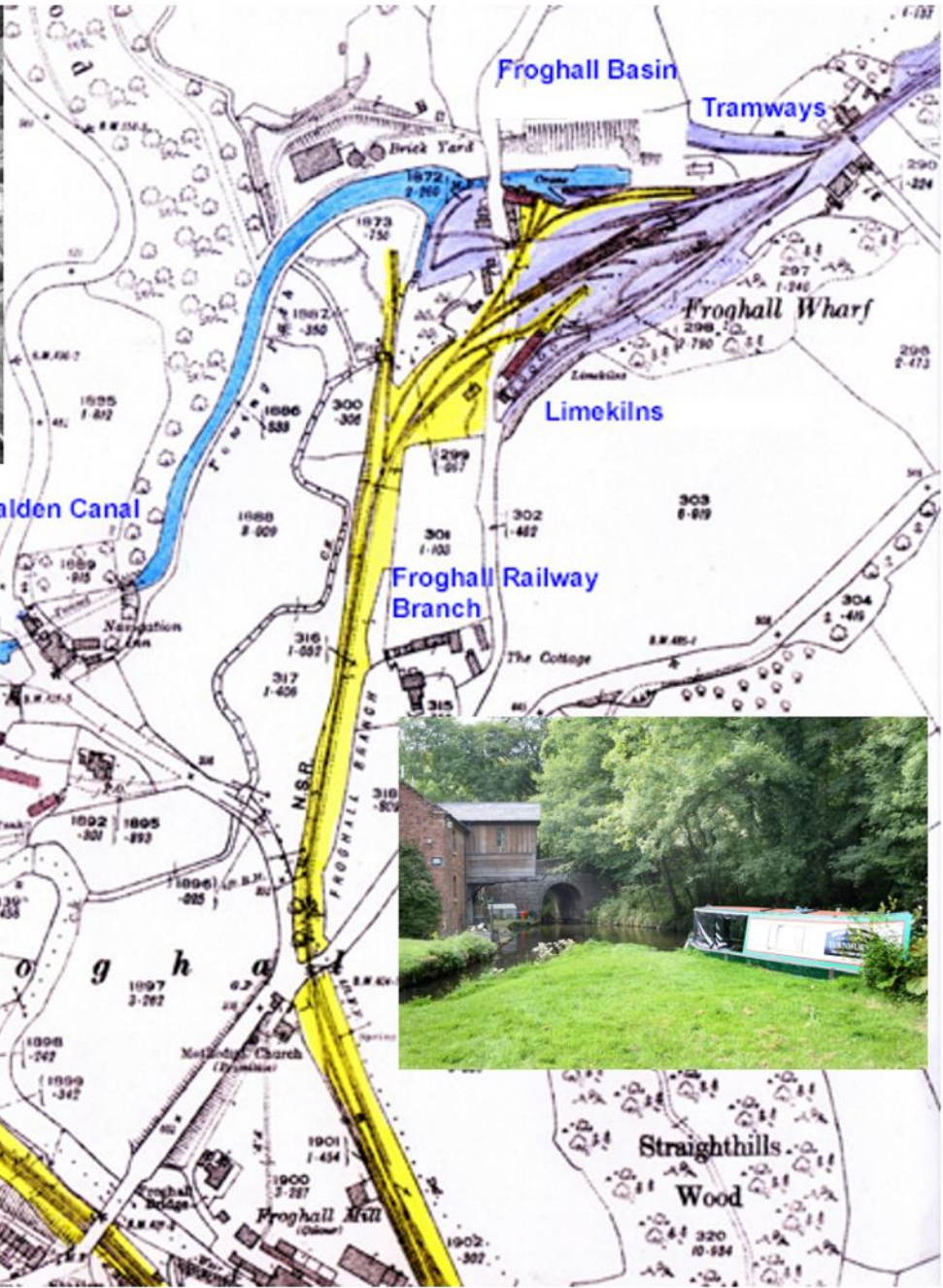












How does what we do affect the heritage?

Environmental legislation had demanded change

Modern developments have quickly overtaken the past

An appreciation of the physical loss results in new initiatives

Heritage is now presented to the tourist









